

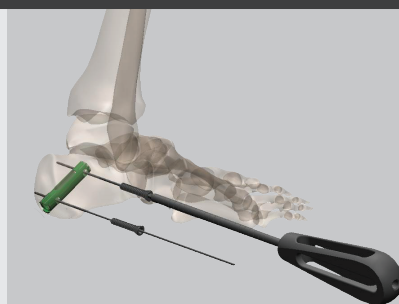


NAIL REMOVAL

STEP 1 • Removal of the locking screws

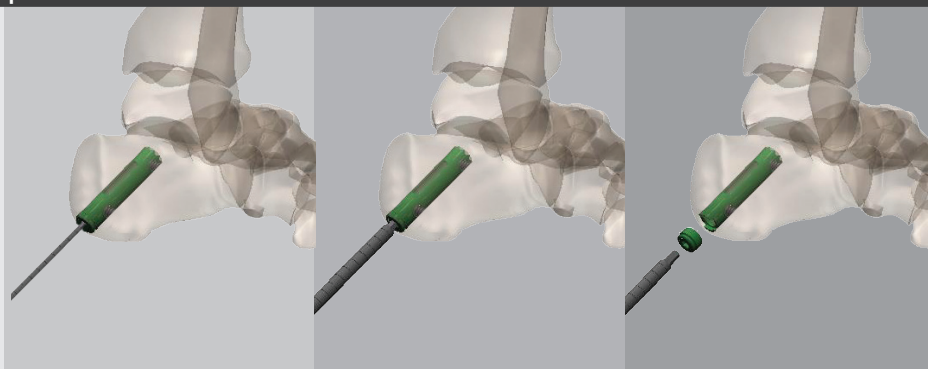
- Reopen the incisions.
- Locate the screw heads and introduce the guide K-wires (*ref. 256 158*) by hand.
- Introduce the screwdriver (*ref. 254 599*) over the K-wires and remove the screws.

Please note: If it is not easy to locate the screw heads (without the alignment frame) or if it is difficult to insert the K-wires by hand, go directly to step 2.



STEP 2 • Removal of the cap

- To remove the cap, use the screwdriver (*ref. 254 599*) and possibly use a pin to center it.

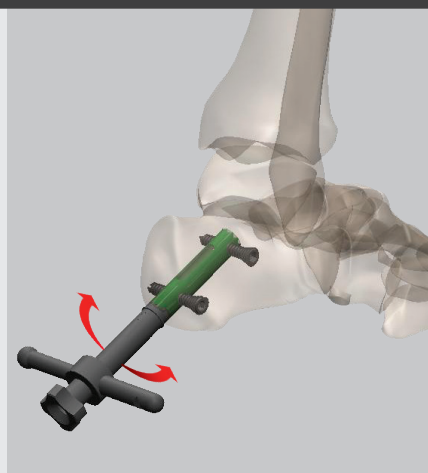


STEP 3 • Assembly of the nail holder and the connecting screw

- For the fracture nail, use the Ø10 mm nail holder (*ref. 265 579*) and handle-nail connector (*ref. 265 568*).
- For the arthrodesis nail, use the Ø12 mm nail holder (*ref. 265 580*) and handle-nail connector (*ref. 265 569*).

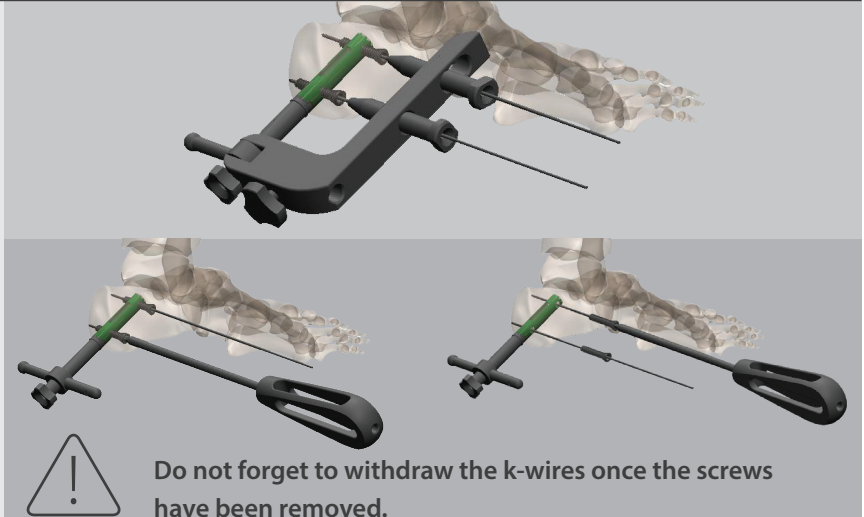


- Clear away the area around of distal end of the nail and the threading with a narrow curette.
- Position the opening of the nail holder on the medial side of the heel.
- If the locking screws have not been removed yet, go to step 4, otherwise go to step 5.



STEP 4 • Locate the screws, insert the K-wire, remove the screws

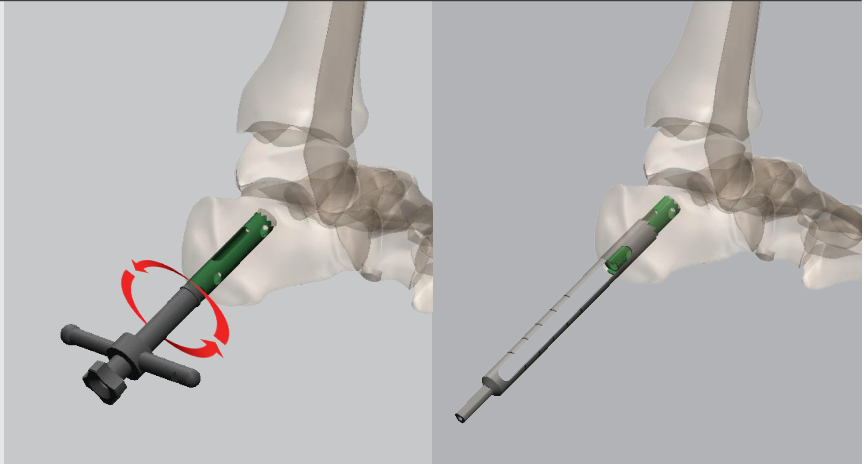
- Use the alignment frame (*ref. 265 577*) for the fracture nail or the alignment frame (*ref. 265 578*) for the arthrodesis nail, and the connecting screw (*ref. 265 581*).
- Use the drill guide for K-wires (*ref. 266 148*) and the Ø1.6 mm K-wires (*ref. 266 158*).
- Introduce the cannulated screwdriver (*ref. 254 599*) over the K-wires and remove the screws. If the screw heads are covered by bone, it is possible to work with the Ø10 mm hollow reamer (*ref. 265 572*) in order to free the drive of the screw.



STEP 5 • Drill around the implant

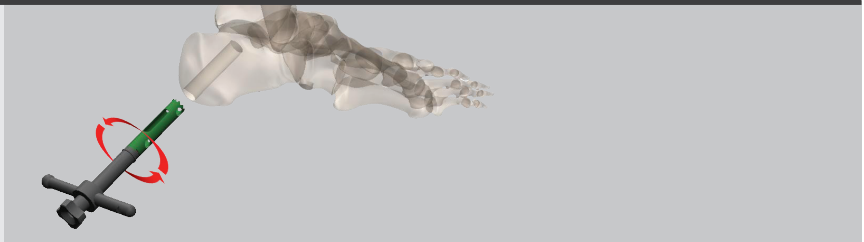
If alternating rotating motions do not cause the nail to move, use the hollow reamer of the next largest diameter to extricate it:

- Remove the nail holder and place the K-wire with stopper (*ref. 265 571*), then put in the hollow reamer of correct size.
- For the fracture nail, use the Ø12 mm hollow reamer (*ref. 265 573*).
- For the arthrodesis nail, use Ø14 mm hollow reamer (*ref. 265 578*).



STEP 6 • Extraction of the nail

- Lift the nail holder and pull on the entire unit using alternating left/right movements to extract the nail.



Ancillary nomenclature

- Calcanail V2 ancillary: ref. A266 349
- Calcanail V3 ancillary: ref. A268 767